

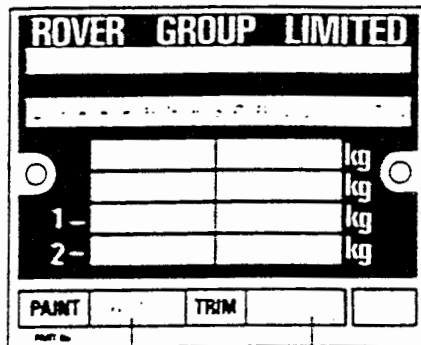
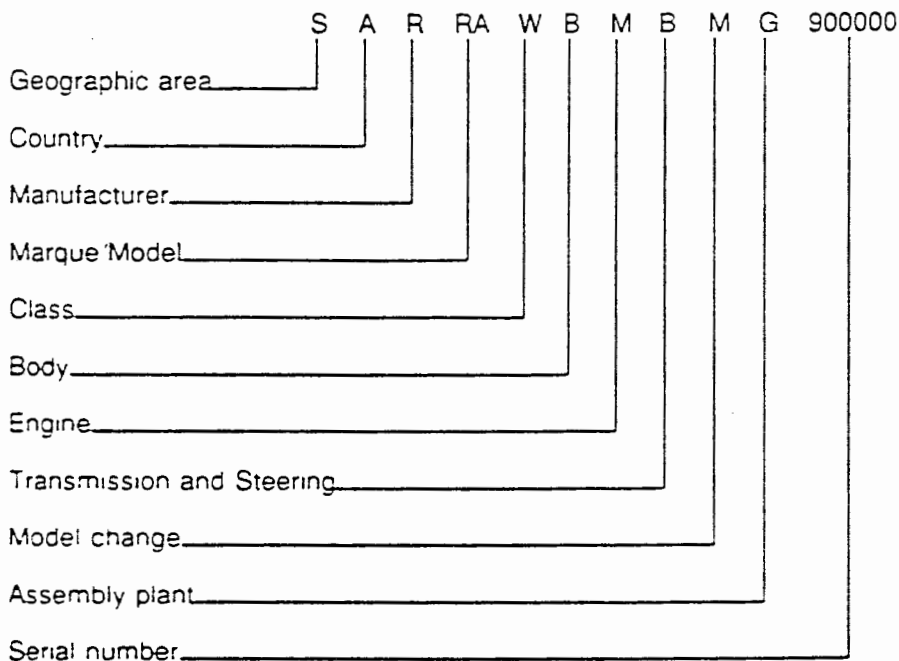
# GENERAL INFORMATION

## VEHICLE IDENTIFICATION NUMBER

### Location

The Vehicle Identification Number (V.I.N.) is stamped on a plate attached to the bonnet lock platform.

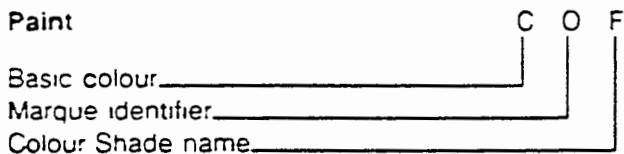
### Vehicle identification number



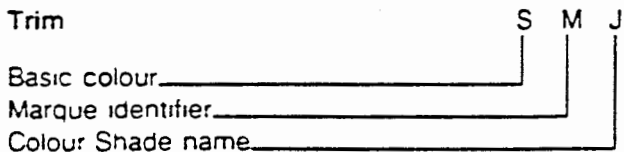
### Paint and Trim colour codes

3 - letter codes identifying the original Paint and Trim colours are stamped on the V.I.N. plate

#### Paint



#### Trim



## IDENTIFICATION NUMBER LOCATIONS

### Engine number:

Stamped on the cylinder block between numbers 3 and 5 cylinders.

### Gearbox number:

Stamped on the bottom R.H. side of the gearbox housing.

### Rear axle number:

Stamped on rear face of differential housing

### Body number:

The body number is stamped on a plate fixed to the bonnet lock platform.